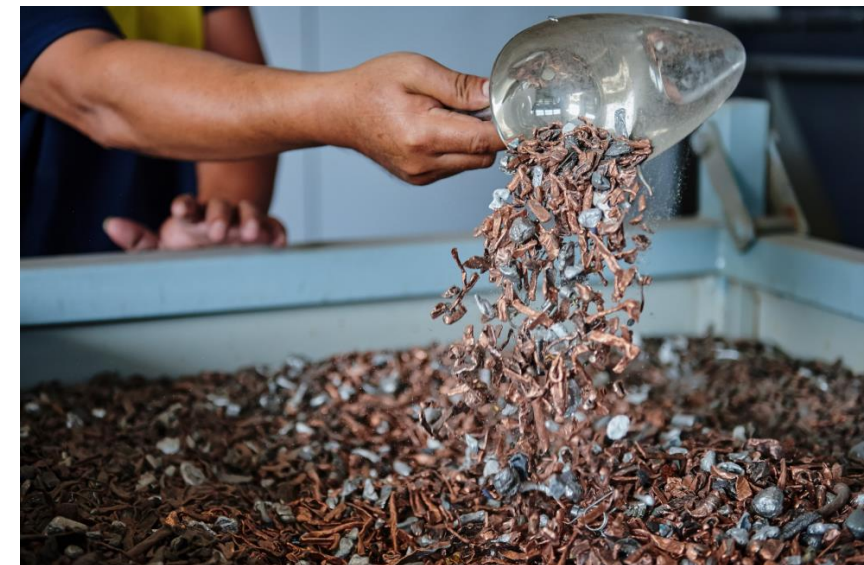
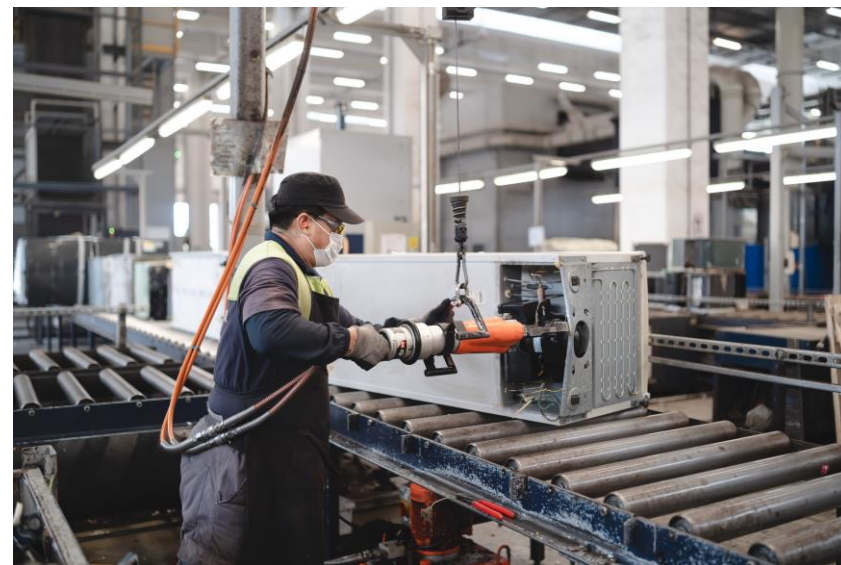


ALBA Integrated Waste Solutions (Hong Kong) Limited (ALBA IWS)

Regulated e-waste recycling service



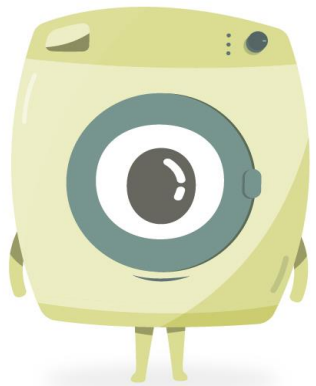
About ALBA IWS

- Joint venture of ALBA Group (a recycling specialist) and Integrated Waste Solution Group (a local waste management service provider)
- Government contract agrees on “Design – Build – Operate - Transfer”
- Develop WEEE · PARK in Tuen Mun’s EcoPark
- Hong Kong’s integrated Waste Electrical and Electronic Equipment (WEEE) treatment facility



What is WEEE (E-waste) in Hong Kong?

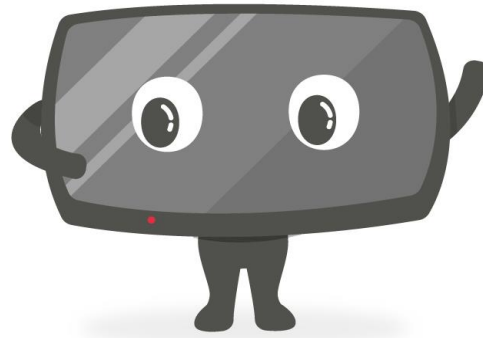
WEEE: Waste Electrical and Electronic Equipment
Currently include 8 types of items in Hong Kong



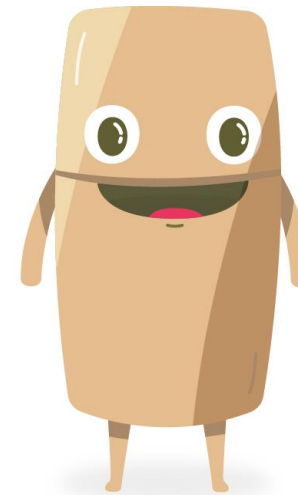
Washing machines



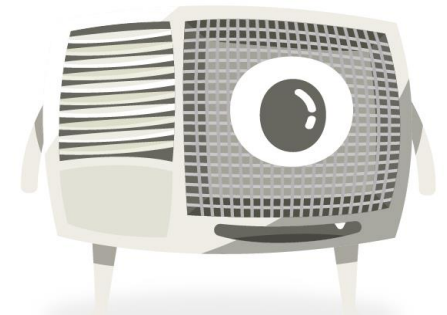
Computers
(incl. monitors, printers & scanners)



Televisions



Refrigerators



Air conditioners

Why should we handle E-waste properly?

- Recover valuable materials from E-waste



- Avoid the improper treatment of hazardous components

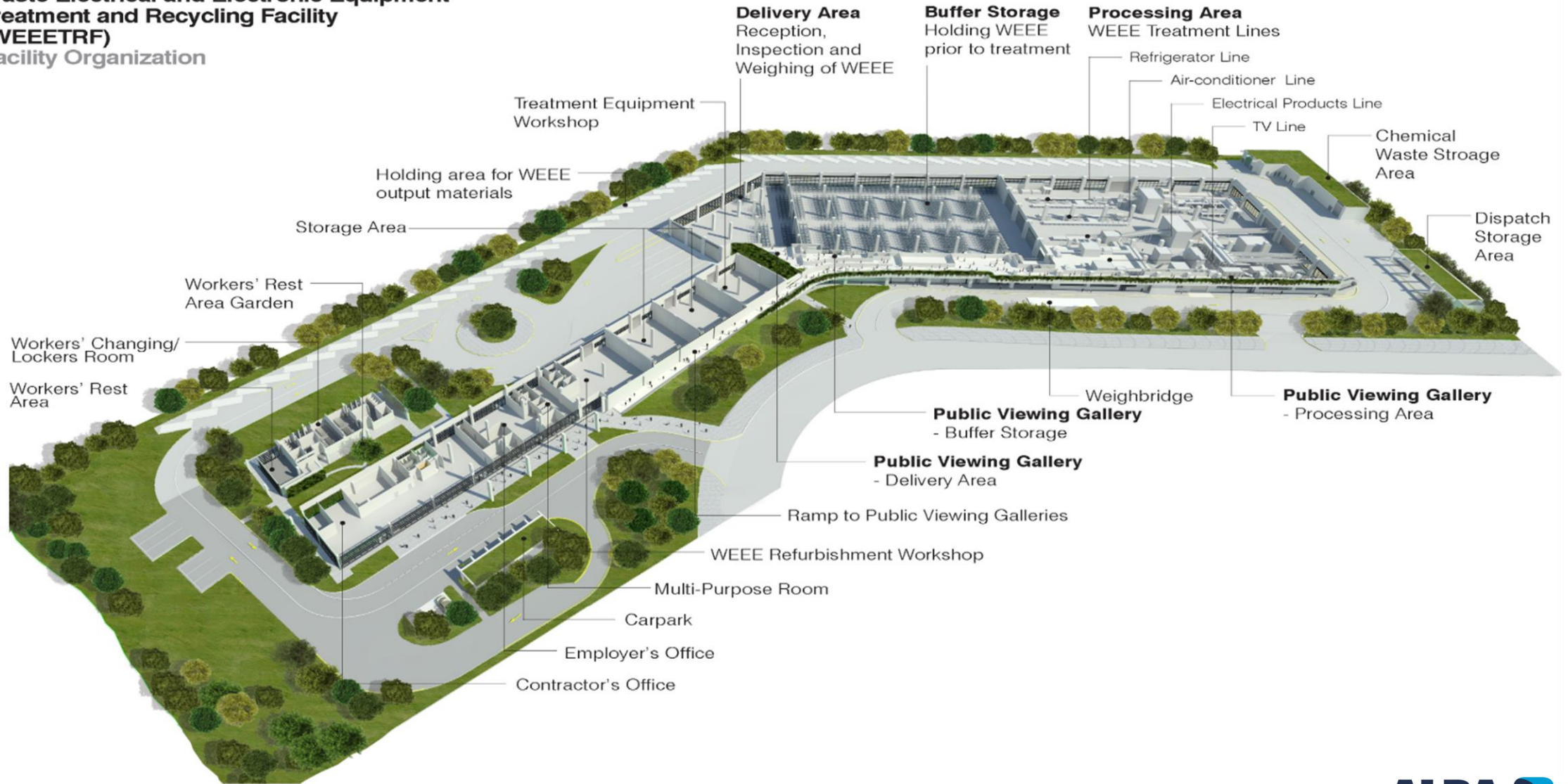


How does ALBA IWS handle e-waste properly?



WEEE - PARK layout

Waste Electrical and Electronic Equipment Treatment and Recycling Facility (WEEETF) Facility Organization



Size of WEEE - PARK



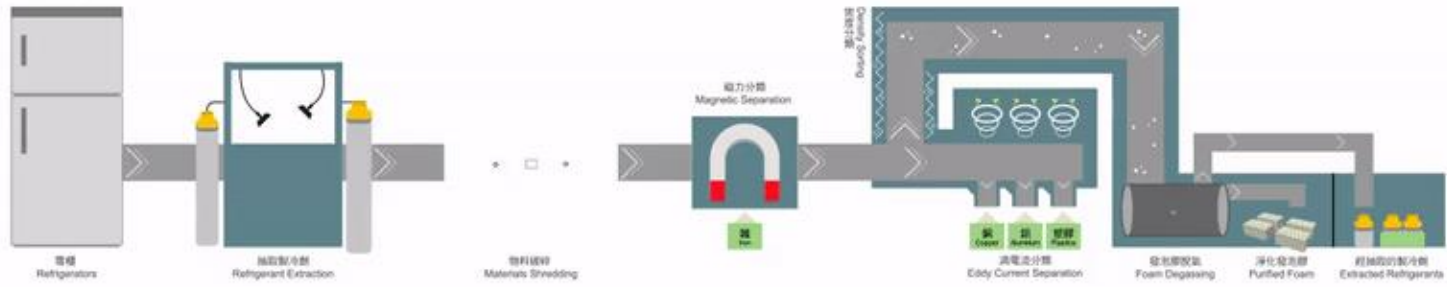
Overall size: 3 ha
3,437 square metre Processing Hall
2,690 square metre Buffer Storage

Regulated electrical equipment processing capacity

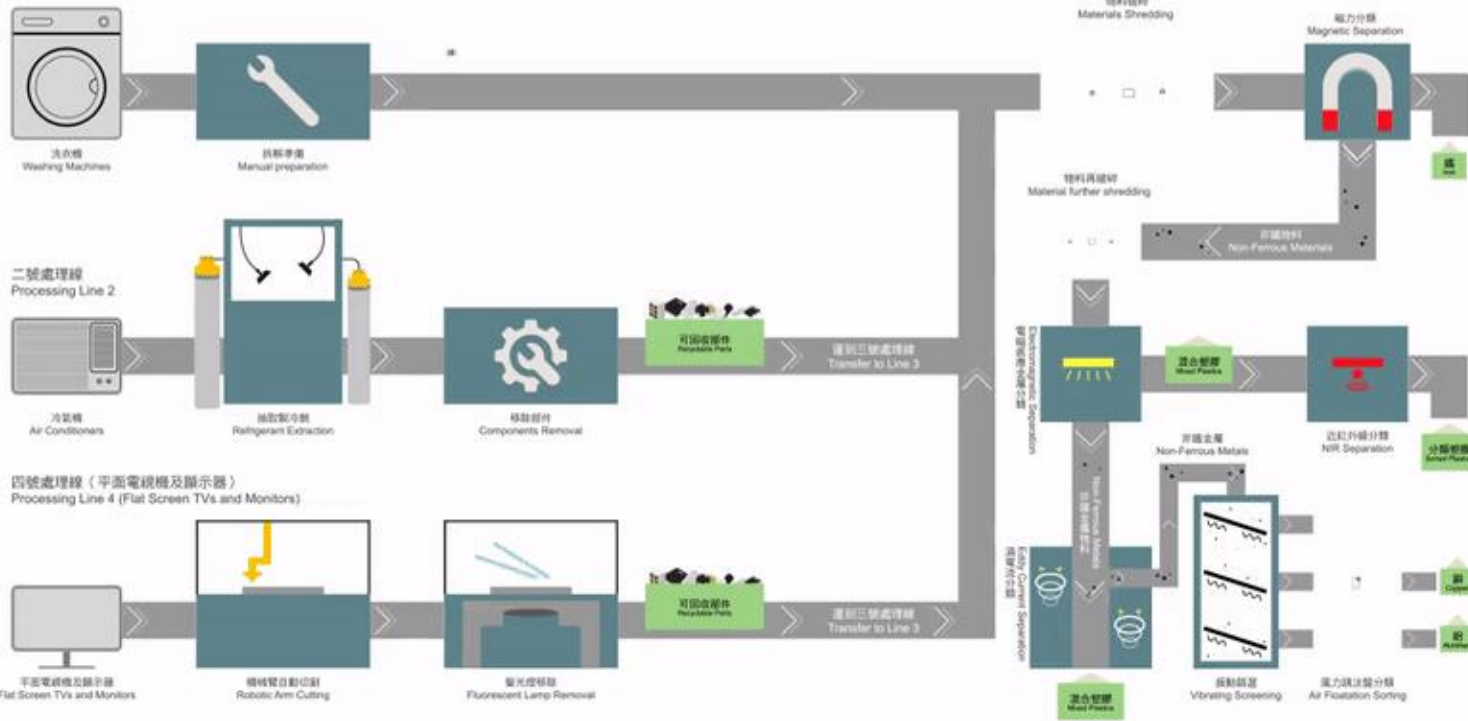


Design capacity: 30,000 tonnes

一號處理線
Processing Line 1



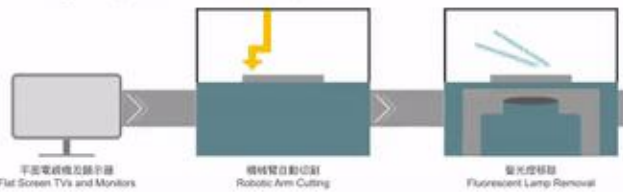
三號處理線
Processing Line 3



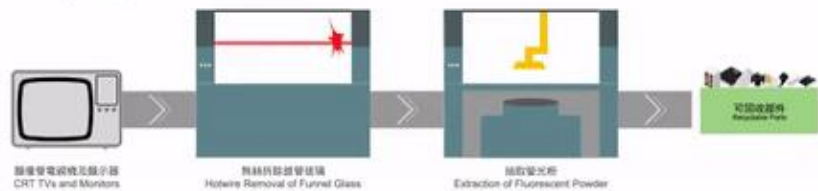
二號處理線
Processing Line 2



四號處理線 (平面電視機及顯示器)
Processing Line 4 (Flat Screen TVs and Monitors)



四號處理線 (顯像管電視機及顯示器)
Processing Line 4 (CRT TVs and Monitors)



Processing lines

E-waste recycling rate

Better than **80%** achieved

Recovered secondary raw material
(as of Feb 2022)



> **30,000** tonnes
of iron



> **6,900** tonnes
of copper

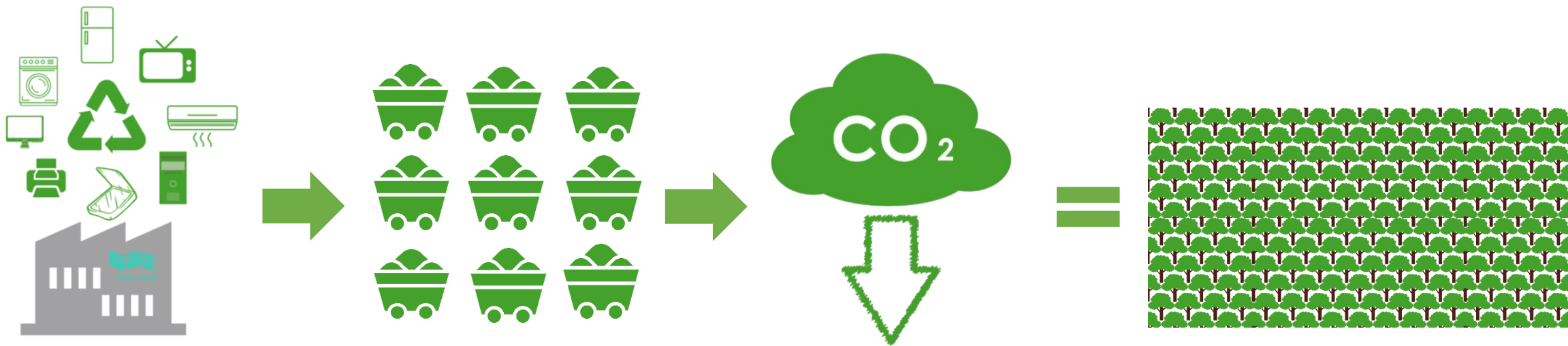


> **4,000** tonnes
of aluminum



> **14,000** tonnes
of plastics

Environmental benefits – Carbon saving



Processed over
3,000,000 WEEE
(as of Feb 2022)

Recovered more than
61,900 tonnes
recyclable
components

Saved more than
200,000 tonnes of
carbon emissions


CO₂ absorbed by over
8.5 million trees #

**Based on estimation done by ALBA IWS in Feb 2022

#CO₂ removed by trees in one year = net number of additional trees planted since the concerned building is constructed x Removal Factor (estimated at 23kg / tree)



WEEE · PARK
Guided tours



Upcycling workshops
at schools

Education



Upcycling workshops
in community



Green talks

Donation

We refurbish some of the collected appliances and donate to people in need via social workers.



WEEE · PARK

Lots P2-P4, EcoPark, 133 Lung Mun Road,
Tuen Mun Area 38, N.T.

General enquiry: 2371 2822

Email: enquiry@weee.com.hk

Recycling hotline: 2676 8888 / 6081 5096 (WhatsApp)



Learn more about us

***Let's work towards a
zero e-waste Hong Kong!***